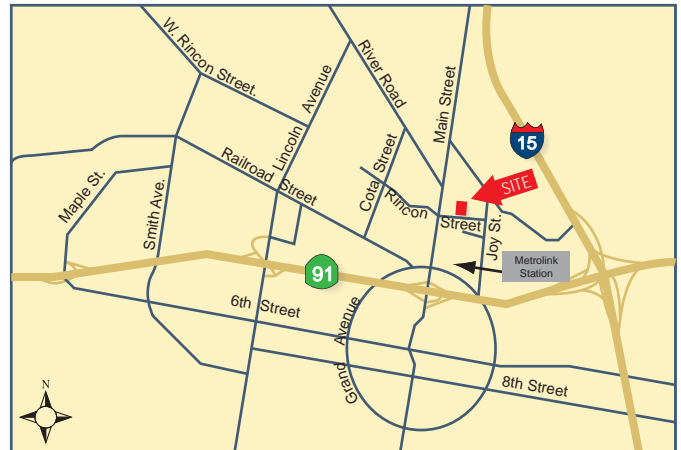


FOR LEASE

590 - 3,325 SF | Corona, CA | Office Suites in High-Image Two-Story Corporate Office Bldg

Presented by Strata Realty, Inc. | www.stratarealty.com | T (951) 280-1733 | F (951) 280-1739**590 to 3,325 SF OFFICE SUITES IN TWO-STORY HIGH-IMAGE CORPORATE OFFICE BUILDING****Location**495 E. Rincon Street
Corona, CA 92879**Features**

- Suites available from 590 SF to 3,325 SF
- Flexible lease terms
- Hands-on landlord
- Beautiful fenced courtyard with fountain and abundant landscaping
- Central Corona location
- Within walking distance to restaurants, retail amenities, and a Metrolink station
- Excellent access to the I-15 and 91 freeways

**Contact:****Timothy Hawke, SIOR**(951) 280-1733 | thawke@stratarealty.com**Adam Silverman**(951) 280-1733 | asilverman@stratarealty.com**Landon Hawke**(951) 280-1733 | lhawke@stratarealty.comStrata Realty, Inc. | 2433 Pomona Road, Corona, CA 92880 | www.stratarealty.com

The information contained herein was obtained from third parties, and it has not been independently verified by the real estate brokers. Buyers/tenants should have the experts of their choice inspect the property and verify all information. Real estate brokers are not qualified to act as or select experts to legal, tax, environment, building construction, soil-drainage or other such matters. Copyright © 2009 Strata Realty. All rights reserved

DRE Information

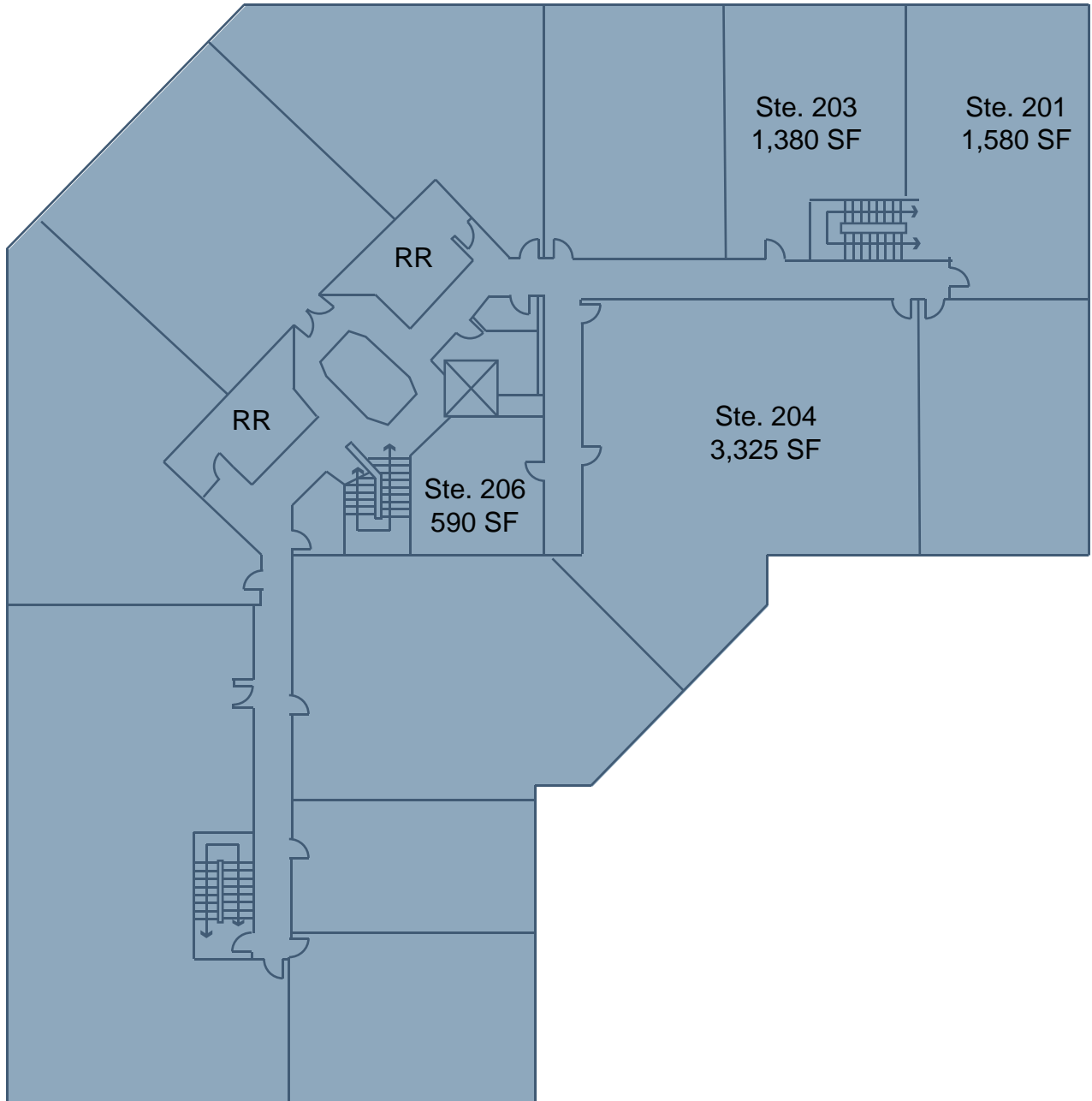
Timothy Hawke's license number is 01403432
Adam Silverman's license number is 01397929
Landon Hawke's license number is 01770844

FOR LEASE

590 - 3,325 SF | Corona, CA | Office Suites in High-Image Two-Story Corporate Office Bldg

Contact: Timothy Hawke, Adam Silverman, or Landon Hawke | T (951) 280-1733

FLOOR PLAN



DRE Information

Timothy Hawke's license number is 01403432
Adam Silverman's license number is 01397929
Landon Hawke's license number is 01770844