

**FOR SALE
OR LEASE**

6,599 SF | Corona, CA | High-Image Free-Standing Office Building

Presented by Strata Realty, Inc. | www.stratarealty.com | T (951) 280-1733 | F (951) 280-1739



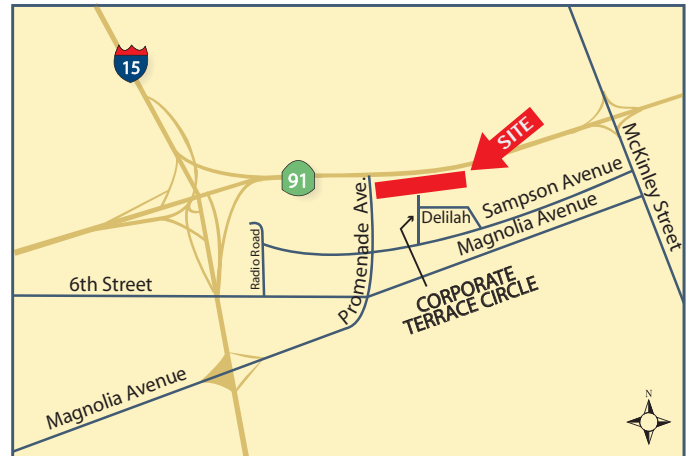
6,599 SF FREE-STANDING OFFICE BUILDING

Location

301 Corporate Terrace Circle
Corona, CA 92879

Features

- Part of a 10-acre, master-planned development
- Five (5) private offices with up to three (3) additional private offices (see floor plan)
- One (1) conference room
- Break room
- Located next to large courtyard with beautiful fountain
- 4:1 parking ratio
- Signage capability on 35' freeway pylon sign
- Approximately 250,000 cars pass by the project daily
- Convenient access to I-15 and 91 freeways
- Close to restaurants, health club, and retail amenities



Contact:

Timothy Hawke, SIOR

(951) 280-1733 | thawke@stratarealty.com

Adam Silverman

(951) 280-1733 | asilverman@stratarealty.com

Landon Hawke

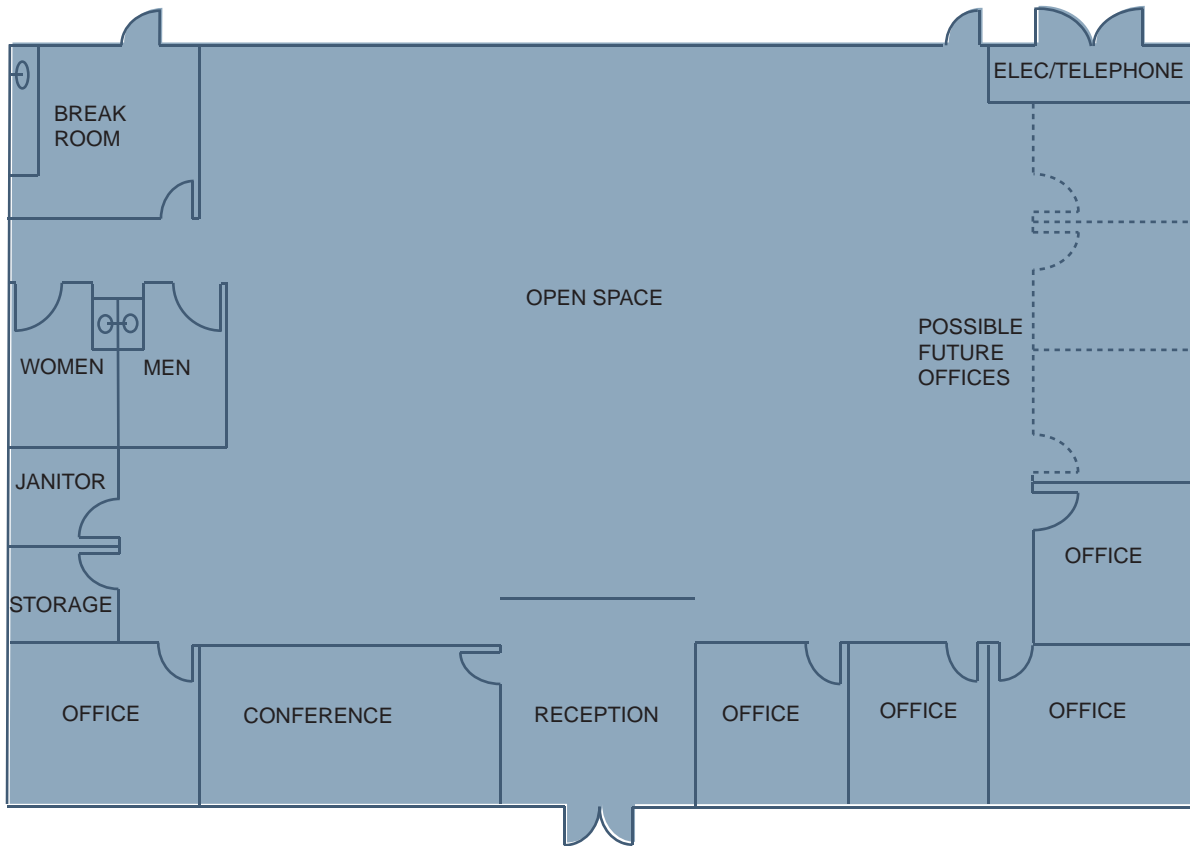
(951) 280-1733 | lhawke@stratarealty.com

**FOR SALE
OR LEASE**

6,599 SF | Corona, CA | High-Image Free-Standing Office Building

Contact: Timothy Hawke, Adam Silverman, or Landon Hawke | T (951) 280-1733

FLOOR PLAN



DRE Information