

**FOR LEASE****1,008 SF | Corona, CA | Office Suite in High-Image Two-Story Corporate Office Building**Presented by Strata Realty, Inc. | [www.stratarealty.com](http://www.stratarealty.com) | T (951) 280-1733 | F (951) 280-1739**1,008 SF OFFICE SUITE IN HIGH-IMAGE BUILDING****Location**

250 E. Rincon Street, Suite 107  
Corona, CA 92879

**Features**

- Part of a 20,328 SF High-Image, Two-Story Corporate Office Building
- Two (2) private offices with third possible
- Newly remodeled entryway, hallways, and restrooms
- Abundant window lines
- Elevator
- Large open area
- Common area restrooms
- Within walking distance to restaurants and other retail amenities
- Excellent access to the I-15 and 91 freeways

**Contact:****Timothy Hawke, SIOR**(951) 280-1733 | [thawke@stratarealty.com](mailto:thawke@stratarealty.com)**Adam Silverman**(951) 280-1733 | [asilverman@stratarealty.com](mailto:asilverman@stratarealty.com)**Landon Hawke**(951) 280-1733 | [lhawke@stratarealty.com](mailto:lhawke@stratarealty.com)**DRE Information**

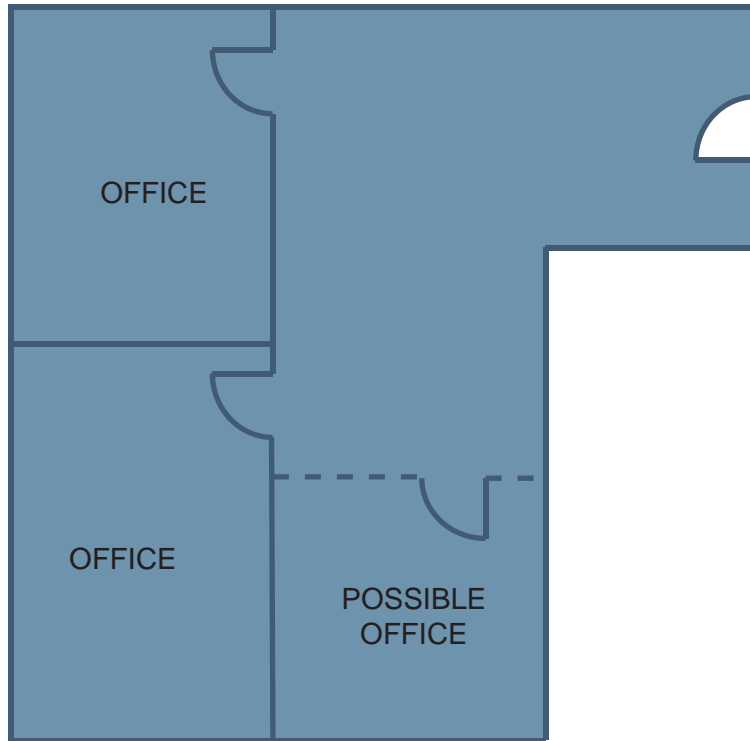
Timothy Hawke's license number is 01403432  
Adam Silverman's license number is 01397929  
Landon Hawke's license number is 01770844

**FOR LEASE**

1,008 SF | Corona, CA | Office Suite in High-Image Two-Story Corporate Office Building

Contact: Timothy Hawke, Adam Silverman, or Landon Hawke | T (951) 280-1733

**FLOOR PLAN**



**REMODELED ENTRYWAY**



**DRE Information**