

FOR LEASE

3,602 - 7,280 SF | Corona, CA | High-Image Office Suite

Presented by Strata Realty, Inc. | www.coronaspectrum.com | T (951) 280-1733 | F (951) 280-1739



3,602 - 7,280 SF HIGH-IMAGE OFFICE SUITE

Location

1867 California Avenue
Corona, CA 92881

Features

- Highly upgraded tenant improvements
- Furnished offices and conference rooms
- Thirteen (13) private offices
- Server room
- Private restrooms
- Window line overlooking courtyard fountains
- 4:1 parking ratio
- Directly across from the South Corona post office and within walking distance to many retail amenities nearby
- Great access to 91 and I-15 freeways



Contact:

Timothy Hawke, SIOR

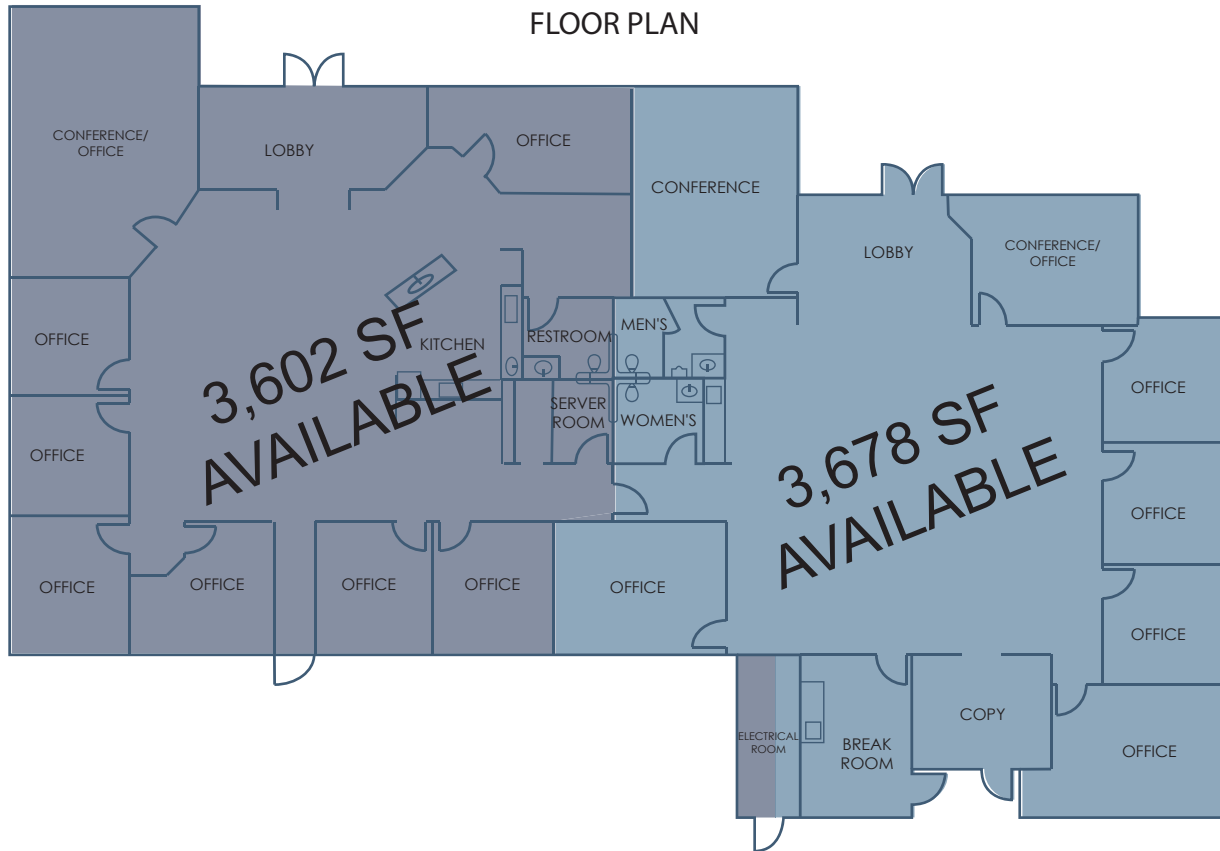
(951) 280-1733 | thawke@stratarealty.com

3,602 - 7,280 SF | Corona, CA | High-Image Office Suite

FOR LEASE

Contact: **Tim Hawke** | www.coronaspectrum.com | T (951) 280-1733

FLOOR PLAN



SITE PLAN

