

FOR LEASE

3,574 SF | Corona, CA | High-Image Office Suite

Presented by Strata Realty, Inc. | www.coronaspectrum.com | T (951) 280-1733 | F (951) 280-1739



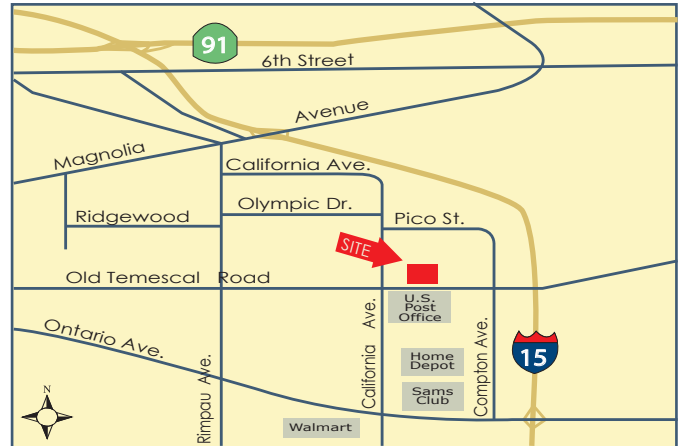
3,574 SF HIGH-IMAGE OFFICE SUITE

Location

1867 California Avenue, Suite 102
Corona, CA 92881

Features

- Part of a 7,280 SF building
- Highly upgraded tenant improvements
- Furnished offices and conference room
- Six (6) private offices
- Server room
- Private restrooms
- Window line overlooking courtyard fountains
- 4:1 parking ratio
- Directly across from the South Corona post office and within walking distance to many retail amenities nearby
- Great access to 91 and I-15 freeways



Contact:

Timothy Hawke, SIOR

(951) 280-1733 | thawke@stratarealty.com

Nelson Simons

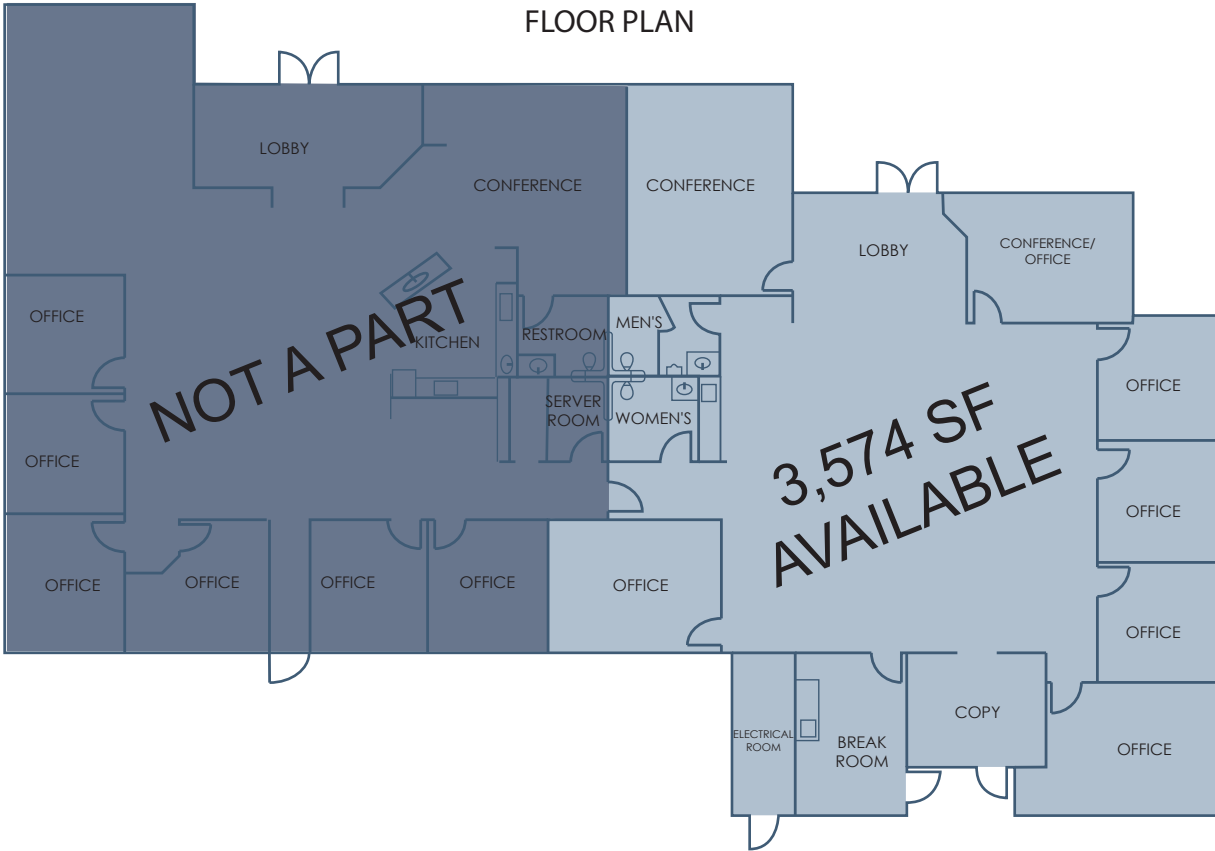
(951) 280-1733 | nsimons@stratarealty.com

3,574 SF | Corona, CA | High-Image Office Suite

FOR LEASE

Contact: **Tim Hawke** or **Nelson Simons** | www.coronaspectrum.com | T (951) 280-1733

FLOOR PLAN



SITE PLAN

