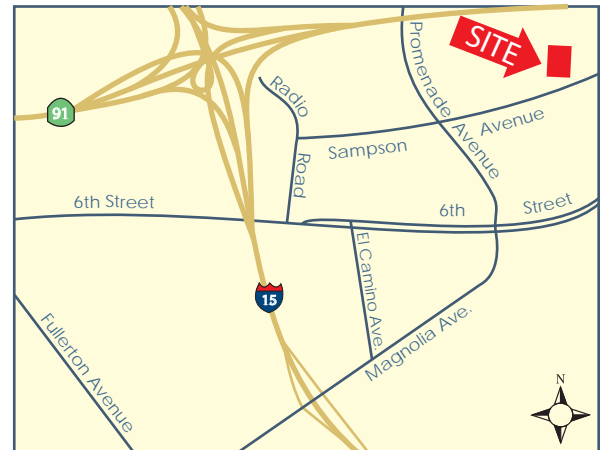


FOR LEASE

1955 Sampson Avenue | Corona, CA | Industrial Land/Unit

Presented by Strata Realty, Inc. | www.stratarealty.com | T (951) 280-1733 | F (951) 280-1739**Industrial Land/Unit****Location**1955 Sampson Avenue
Corona, CA 92879**Features**

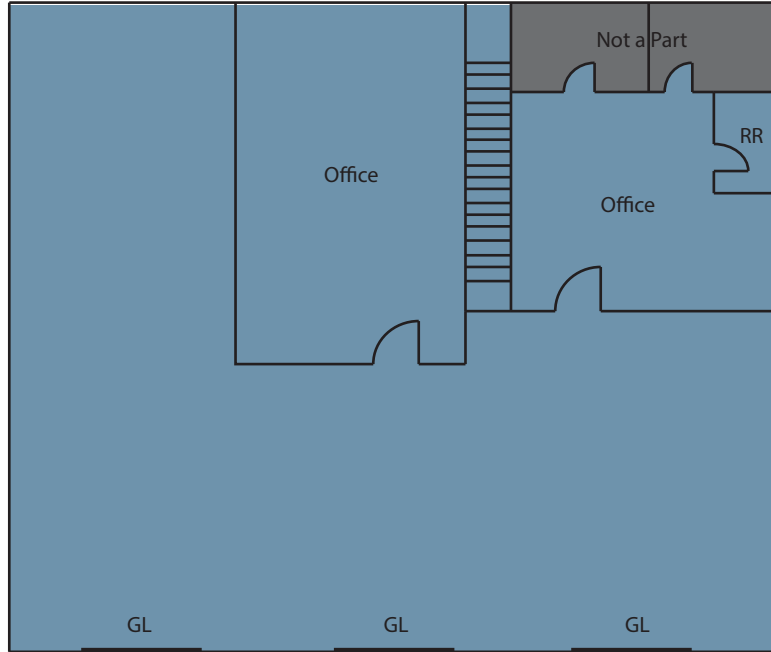
- Approximately 14,000 SF fenced yard
- Approximately 2,000 SF of warehouse
- Approximately 797 SF of office
- M-2 Zoning
- 91 Freeway Visibility
- Rehabbed in 2007
- APN 115-670-019
- Easy Access to 91 and I-15 Freeways
- Abundant Retail Amenities Within a Short Distance From Site, Including Wal-Mart, Costco, Home Depot and 24 Hour Fitness

**Contact:****Timothy Hawke, SIOR**
(951) 280-1733 | thawke@stratarealty.com

FOR LEASE

1955 Sampson Avenue | Corona, CA | Industrial Land/Unit

Contact: Timothy Hawke | T (951) 280-1733



Strata Realty, Inc. | 2433 Pomona Road, Corona, CA 92880 | www.stratarealty.com

The information contained herein was obtained from third parties, and it has not been independently verified by the real estate brokers. Buyers/tenants should have the experts of their choice inspect the property and verify all information. Real estate brokers are not qualified to act as or select experts to legal, tax, environment, building construction, soil-drainage or other such matters. Copyright © 2009 Strata Realty. All rights reserved

BRE Information

Timothy Hawke's license number is 01403432