

FOR LEASE

10,000 SF | Corona, CA | Office & Showroom Location

Presented by Strata Realty, Inc. | www.stratarealty.com | T (951) 280-1733 | F (951) 280-1739



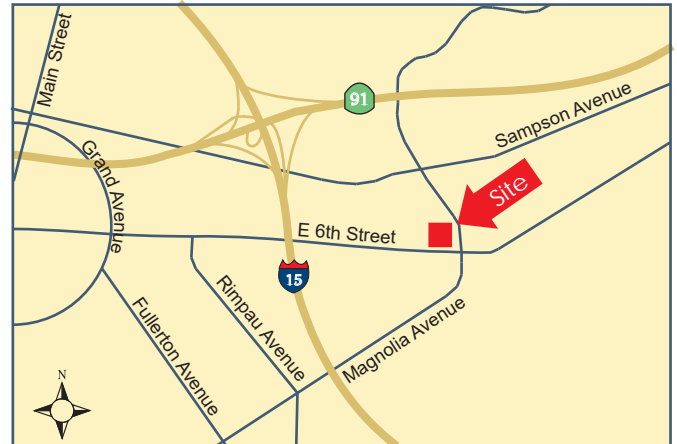
10,000 SF Completely Refurbished High-Quality Office and Showroom Location

Location

1595 E. Sixth Street
Corona, CA 92879

Features

- Signalized corner of Sixth Street and Promenade
- Highly visible 10,000 SF two-story office
- Open floor plan on first and second floors
- Ample parking
- Permanent building signage available
- Convenient access to the I-15 and 91 freeways
- Nearby restaurants, hotels and other amenities



Contact:

Timothy Hawke, SIOR

(951) 280-1733 | thawke@stratarealty.com

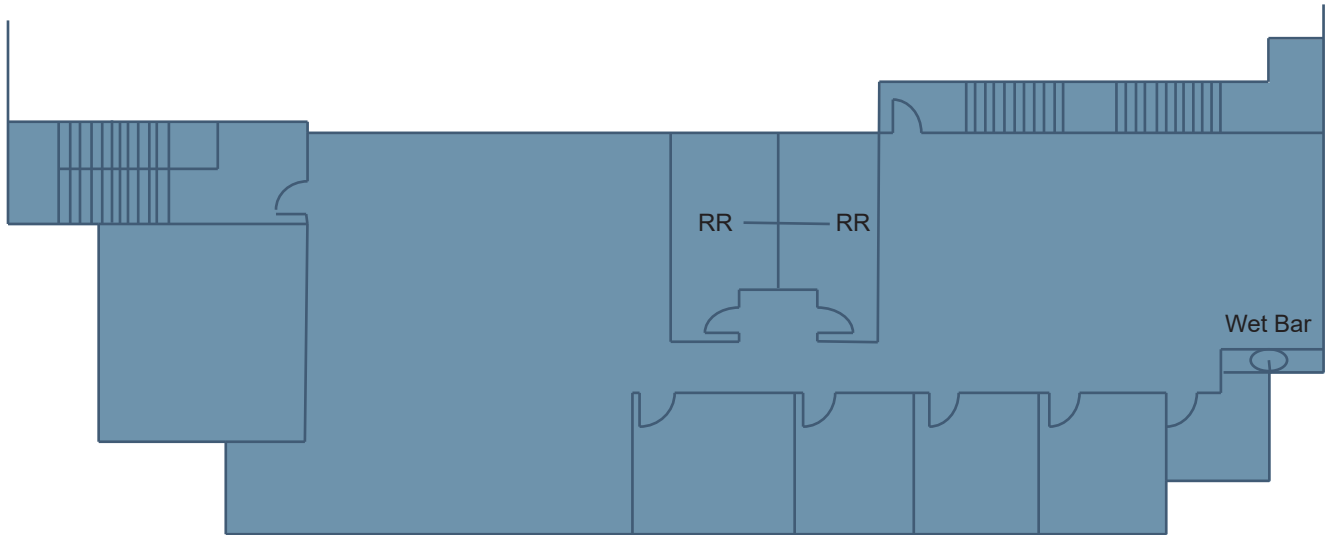
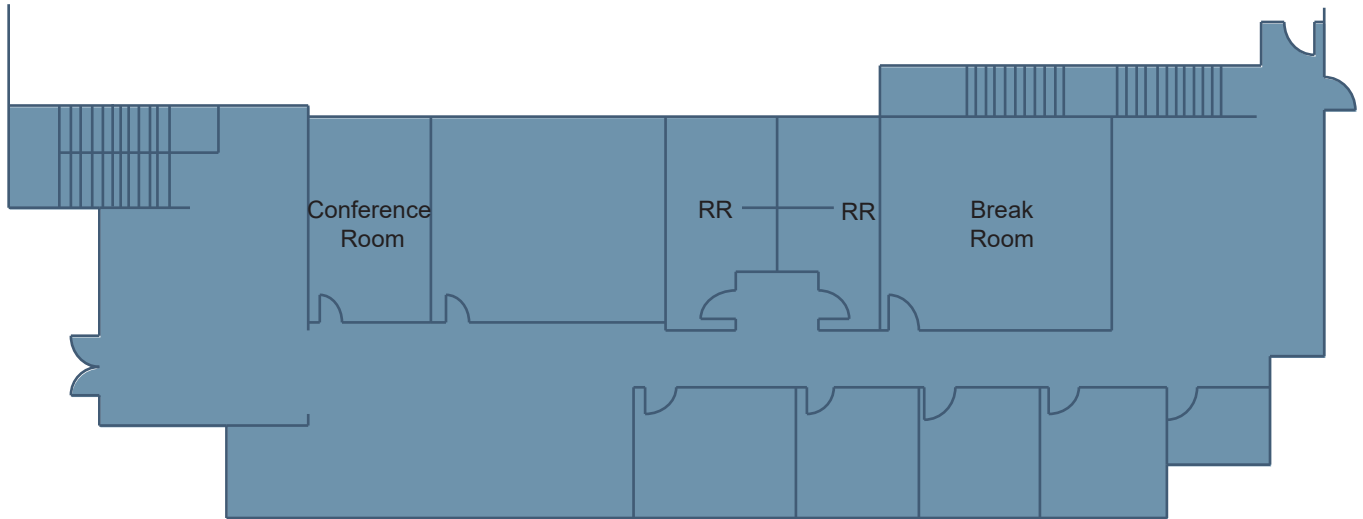
Angela Draper

(951) 280-1733 | adraper@stratarealty.com

FOR LEASE

10,000 SF | Corona, CA | Office & Showroom Location

Contact: Timothy Hawke or Angela Draper | T (951) 280-1733



BRE Information

Timothy Hawke's license number is 01403432
Angela Draper's license number is 01972882